

# FALCON Series Area Monitors



## Features:



- 1 uR/hr to 100 mR/hr Range
- Large CsI Detector with PMT
- Mesh Network Enabled
- Battery Backup Operation
- Multiple Configuration Options
  - Enclosure Color
  - Display
  - Extended Detection Range - 50 R/hr
  - Weatherproof Enclosure

## Introduction

The FALCON series area monitors offer a new generation design that present a clear contrast to the much older style and technology so prevalent in the market today. These industrial designed monitors employ small CsI detectors that deliver high sensitivity in a very small package making them ideal for a wide variety of applications. The FALCON area monitors are available in several configurations to accommodate the enclosure color, detection range, and outdoor usage. Another option is a color LCD display that not only presents the measurement using very large size characters for easy viewing from a distance, but will additionally provide a log history or other details by simply tapping the touch screen display.

All FALCON area monitors are RADConnect enabled to wirelessly connect via a Mesh type network back to a central PC. Up to 50 FALCONs or other RADConnect devices can communicate bi-directionally across the network using 128-bit encryption protection. All devices can be monitored by a PC on the network or across the internet to any tablet or remote PC. The system delivers real-time and past event logs and will annunciate anytime one of the devices exceeds its preset values. All your FALCON readings can be arranged to display on a floor plan, map, satellite image, or other image of your choosing to provide a real-time overview and status over each location.

This product is available through:

**JRT** Associates 800-221-0111

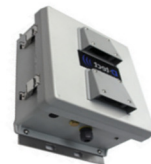
# FALCON Series Area Monitors

## Model FALCON Area Monitor Specifications

Detector	6 cm <sup>3</sup> CsI scintillation crystal with a PMT Extended range PIN Photodiode detector (available on some configurations)
Communication	RADConnect, Wi-Fi, Ethernet, USB, optional RADConnect-Link
Power	120/240V AC, 50/60 Hz 110/220V Auto Detect
Installation	Mount directly to junction box, Standard power cord
Backup Power	Lithium-ion battery
Response Time	Less than 1 second
Dose Rate Range	1 uR/hr to 100 mR/hr
Extended range configurations:	1 uR/hr to 50 R/hr (Air-kerma dose conversion 1 R = 0.876 REM for per ANSI N42.32-2006)
DR Linear Error	+/- 10% to Cs137 Energy Range 59 keV to 2 MeV
Display	LCD 4.3 in. Color TFT / Resolution 480 x 272 / Touch Screen
Units	uRem/hr, CPS, uSv/h
Audible Alarm	Piezoelectric buzzer (with LCD Display version only)
Alarm Volume	> 98 dB
Humidity	< 95% (non-condensing)
Dimensions	5.97 x 5.92 x 1.75 in.
Weight Non-LCD version:	0.5 lb (0.2 kg)
LCD version:	0.65 lb (0.3 kg)
Environment	IP65 rated for indoor/outdoor operation

---

## **FALCON** **Configurations**



FALCON-1	Standard configuration (specify black or white, no display)
• FALCON-1LCD	With LCD display (specify black or white)
• FALCON-1EX	Extended detection range (specify black or white, no display)
• FALCON-1EXLCD	Extended detection range with display (specify black or white)
• FALCON-1WEX(NEMA)	Extended detection range with weatherproof enclosure