

# Mammography BR3D Phantom

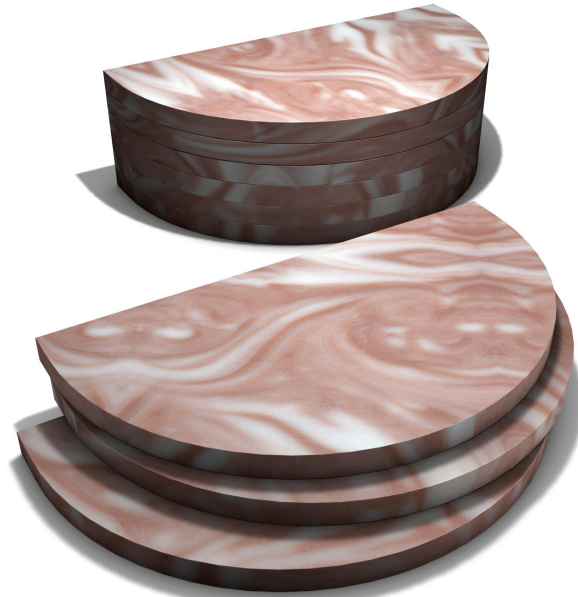


*For Tomosynthesis and Breast CT*

The CIRS Model 020 BR3D Mammography Phantom was designed to assess detectability of various size lesions within a tissue equivalent, complex, heterogeneous background. This phantom provides more realistic challenges for standard screen and FFDM mammography systems as well as Tomosynthesis and breast Computed Tomography.

The phantom consists of a set of 6 slabs made of heterogeneous breast equivalent material that exhibits characteristics of real breast tissue and demonstrates how underlying targets can be obscured by varying glandularity. Each slab contains two tissue equivalent materials mimicking 100% adipose and gland tissues “swirled” together in an approximate 50/50 ratio by weight. One of the slabs contains an assortment of micro-calcifications, fibrils and masses.

Each semicircular shaped slab measures 100 x 180 x 10 mm. Each slab, with its unique swirl pattern, provides varying backgrounds when arranged in multiple combinations and thicknesses.



Model 020

## Benefits

- Tests Tomosynthesis and Breast Computed Tomography
- More representative than standard homogenous phantoms
- Complex background provides greater challenge for target detection
- Slab configurations provides range of thicknesses with or without targets



This product is available through:

**JRT** Associates 800-221-0111

# Model 020

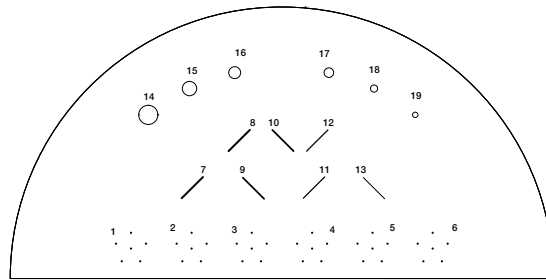
## Specifications:

### BACKGROUND SLABS

Epoxy resin: equivalent to 50% glandular / 50% adipose tissue

Size: 100 x 180 x 100 mm, semicircular shape

Quantity: 5 slabs

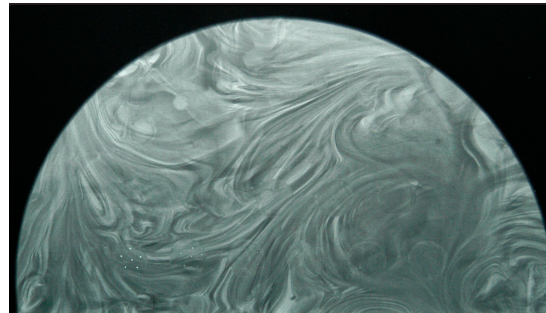


### TARGET SLAB

Epoxy resin: equivalent to 50% glandular / 50% adipose tissue

Size: 100 x 180 x 100 mm, semicircular shape

Quantity: 1 slab



Screen film mammography image of the target slab

### LESIONS (CaCO<sub>3</sub> specks)

Grain size: 0.130, 0.165, 0.196, 0.230, 0.275 & 0.400 mm

### SPHEROIDAL MASSES

Epoxy resin: 75% glandular / 25% adipose,

Diameters: 1.80, 2.38, 3.18, 3.96, 4.76 & 6.32 mm

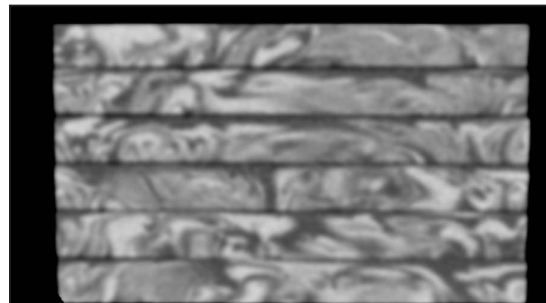
### FIBERS

10 mm length

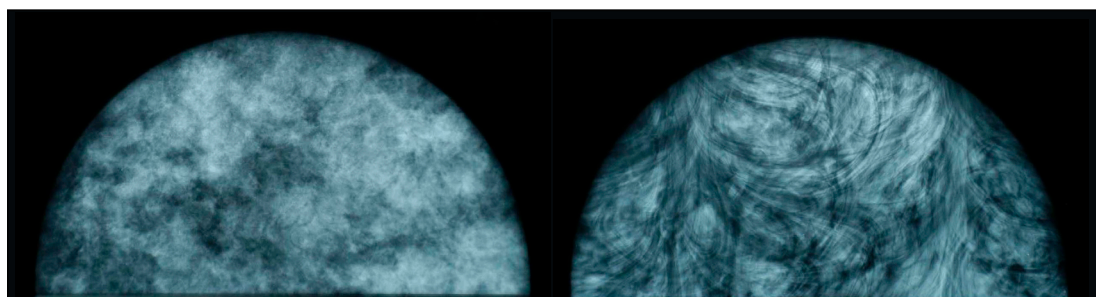
Diameters: 0.15, 0.18, 0.23, 0.28, 0.38, 0.41 & 0.60 mm

### PHANTOM INCLUDES

Handling Instructions and 48 month warranty



Coronal CT image of the Phantom Set



Screen film mammography image of the phantom set, variable pattern 1

Screen film mammography image of the phantom set, variable pattern 2