

ACR CT ACCREDITATION EXTENSION PLATES

MODEL 464-EXTPLT-KIT

ACCURATELY REPRESENT SCATTER EFFECTS FROM WIDE-BEAM CT SCANS WITH THE ACR 464 EXTENSION PLATES. MADE FROM IDENTICAL SOLID WATER® MATERIALS, THESE EXTENSION PLATES ALLOW IMAGES TO BEGIN AND END IN THE SAME MATERIAL TO ELIMINATE ARTIFACTS THAT MAY BE INTRODUCED BY SCANNING IN AIR.



CONFIDENCE WITH YOUR ROUTINE QA

No more need to add water bolus to your ACR CT Phantom. Simply place the Gammex 464 Phantom between the Extension Plates, level and scan using your normal protocols.

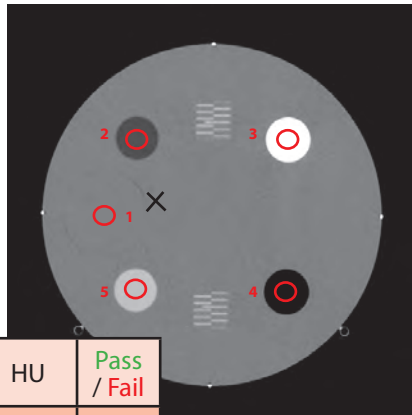
The kit includes two Extension Plates and the adjustable stand. Optional soft-cases are available for the Extension Plates and stand, or for the entire Gammex 464 Phantom and Extension Plate kit.



ACR 464 PHANTOM SOLD SEPARATELY

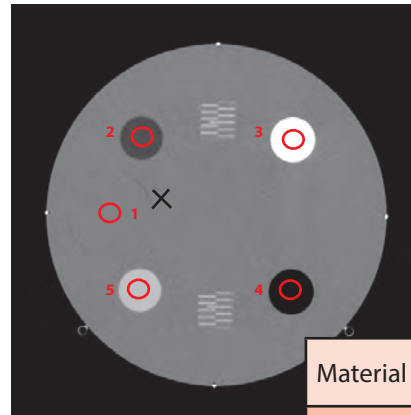


WITHOUT EXTENSION PLATES



Material	HU	Pass / Fail
Bone	+918	Pass
Air	-1021	Fail
Acrylic	+96	Fail

WITH EXTENSION PLATES



Material	HU	Pass / Fail
Bone	+940	Pass
Air	-997	Pass
Acrylic	+122	Pass

Example images and results of Module 1

SPECIFICATIONS (ACR 464 PHANTOM SOLD SEPARATELY)

Materials	
Extension Plates & Stand	Standard Imaging Grade Solid Water®
Support Rods	Carbon Fiber

Extension Plate Diameter	20.0cm (7.87 in.)
Extension Plate Thickness	4.0cm (1.57 in.)
Total Weight	3.2kg (7.0 lbs.)



Optional cases for easy transport & safe storage

- Extension Kit Case
- Phantom & Extension Kit Case

This product is available through **JRT** Associates 800-221-0111

